

Usage of the QNix Gauge Update Wizard

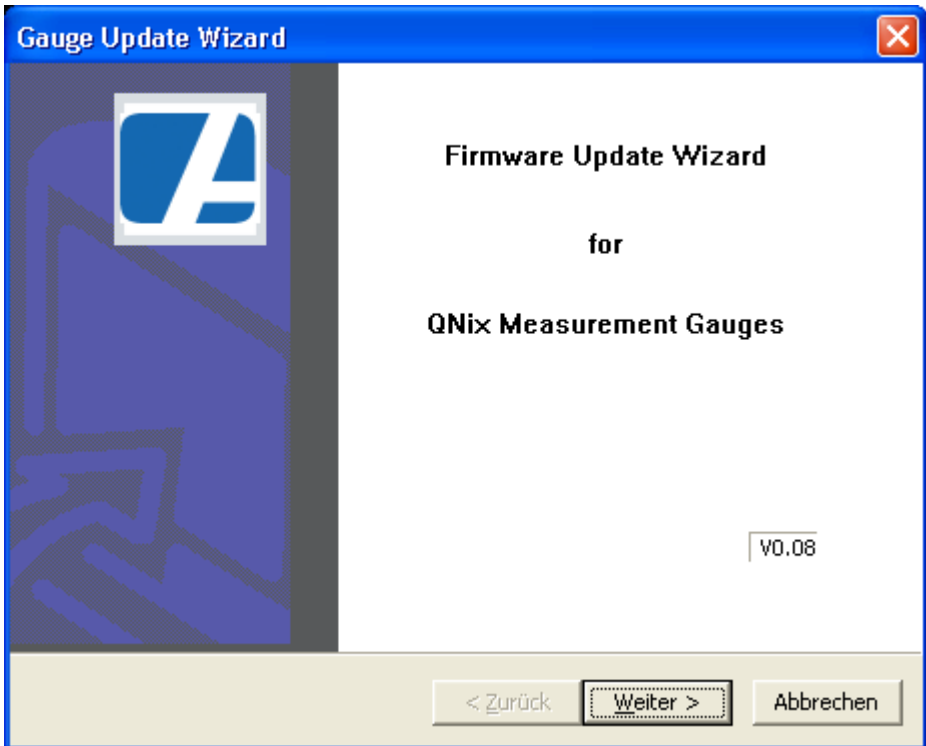
Installation

Unzip the downloaded file (GaugeUpdateWizard.zip) and start the setup program (setup.exe). Follow the instructions of the setup program to install the Gauge Update Wizard.

Usage

Start the program by double clicking on its icon on the desktop, by selecting it from your start menu or by double clicking the exe file in an explorer window.

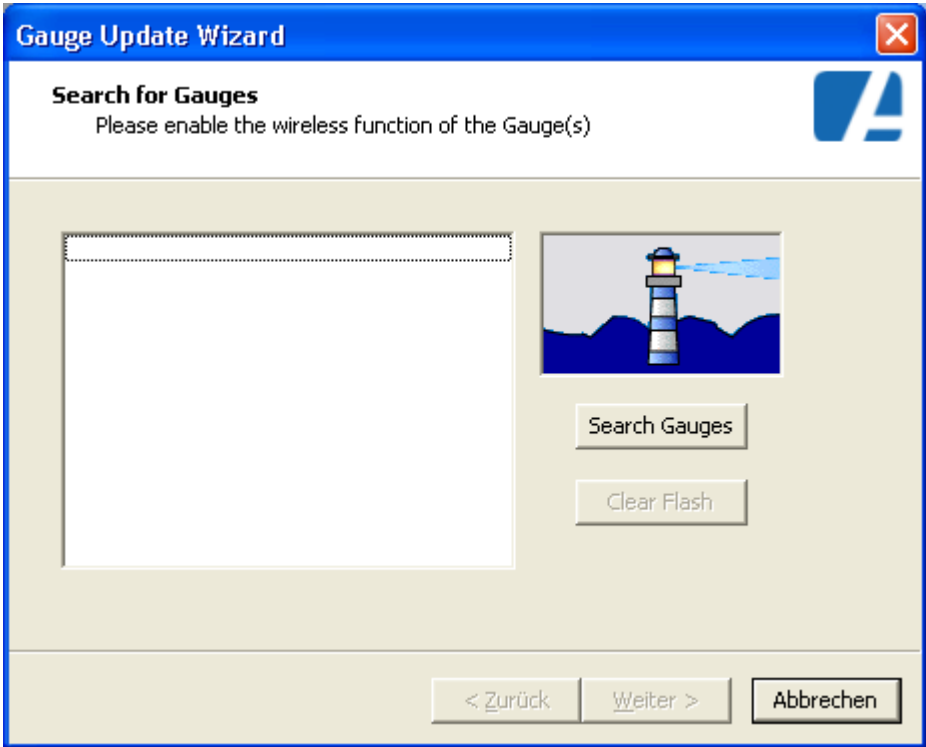
The Gauge Update Wizard will show its introduction screen.



Screen 1: Introduction screen

Click **Next** to continue.

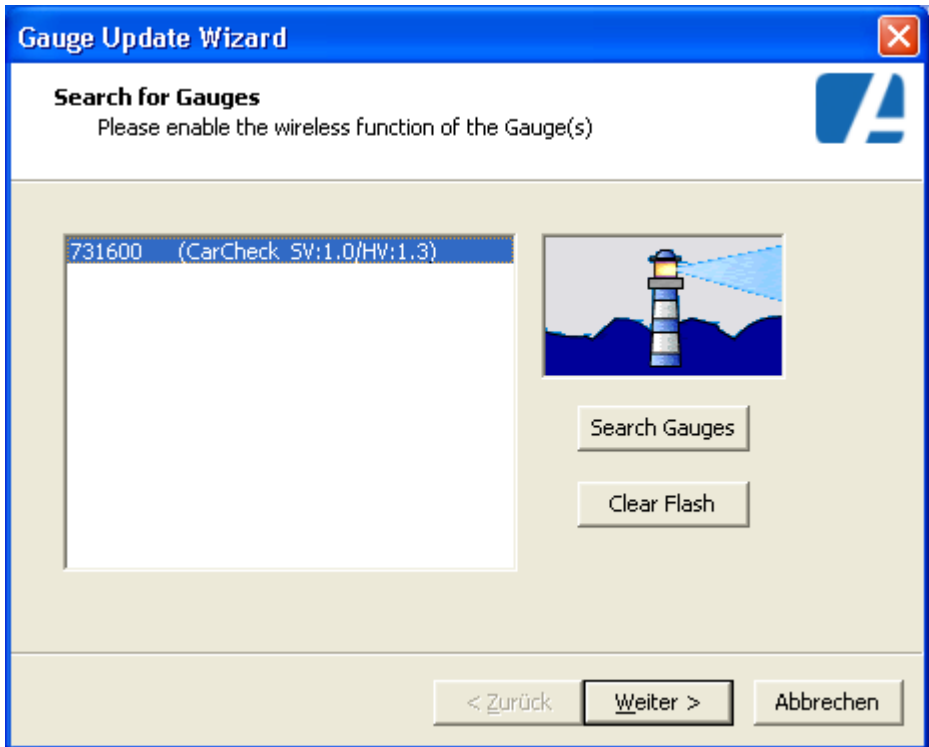
You will now see the search gauges dialog.



Screen 2: search gauges dialog

Make sure you have the wireless link of your gauge enabled (select Setup/Wireless/On from the menu of your gauge) and the USB dongle connected to your computer. Then click **Search Gauges** in the dialog.

After some seconds, the gauge (or gauges, if there are several gauges within the range of the wireless link) should be listed in the text box of the dialog.



Screen 3: search gauges dialog with 1 gauge found

In the example above, the wizard has found a gauge with serial number 731600, Firmware Rev. 1.0 and Hardware Rev. 1.3.

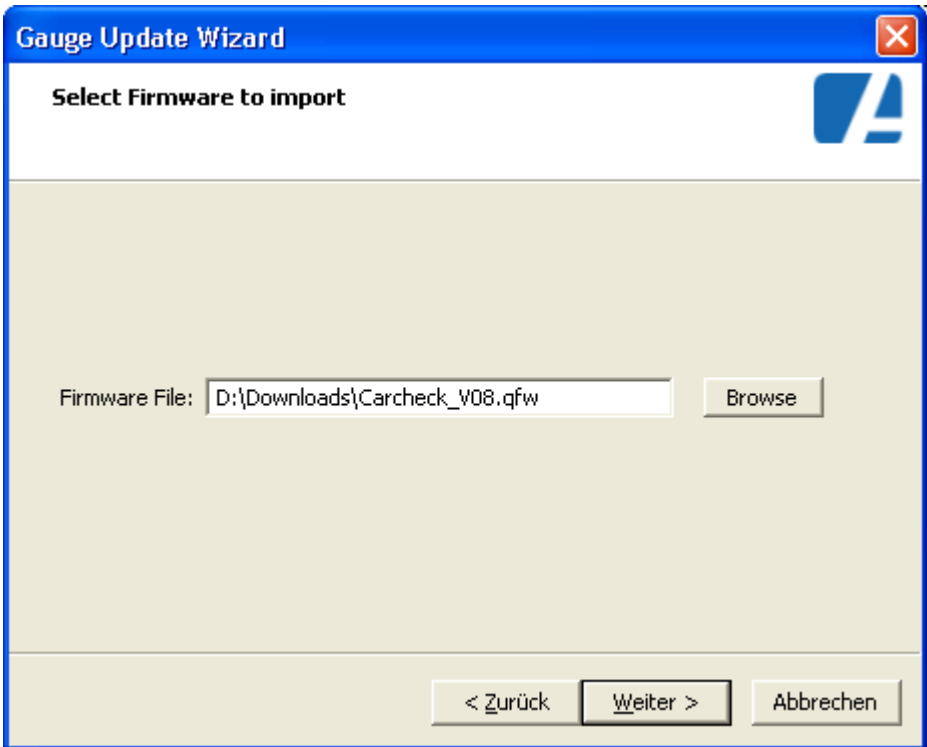
If the list shows more than 1 gauge, select the one you want to update.

Note:

The **Clear Flash** button is activated when a gauge is found. This button is used to resolve special issues and is described at the end of this document.

Press **Next** again.

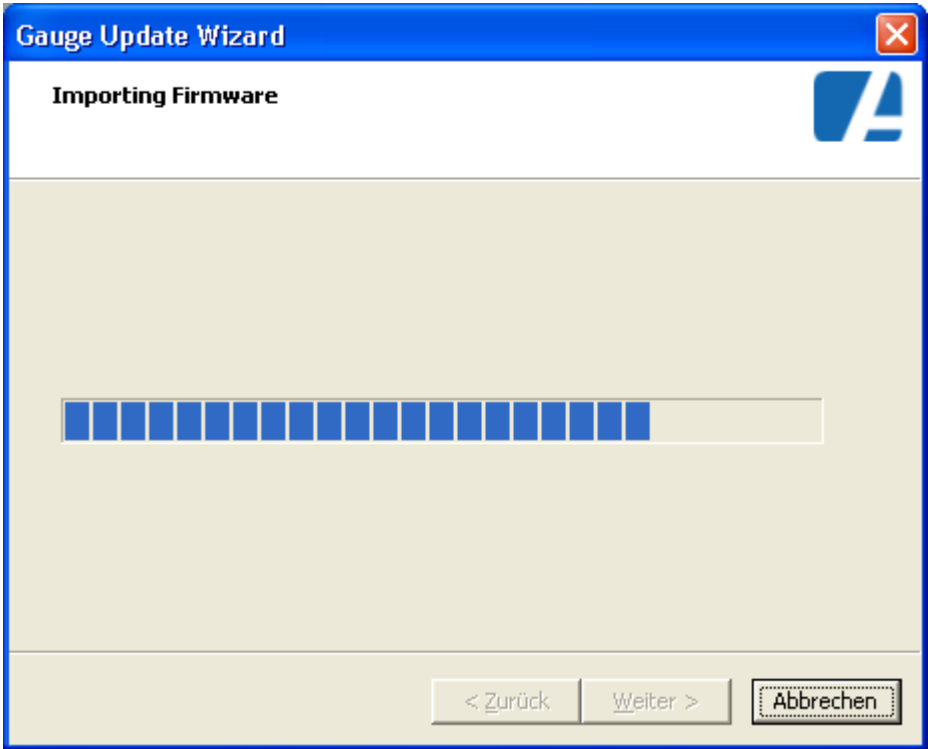
You will see the firmware selection screen now. Click **Browse** to select the appropriate update file from your hard disk or CD. QNix gauge update files have the extension „.qfw“. You can also enter the path and filename directly into the text box.



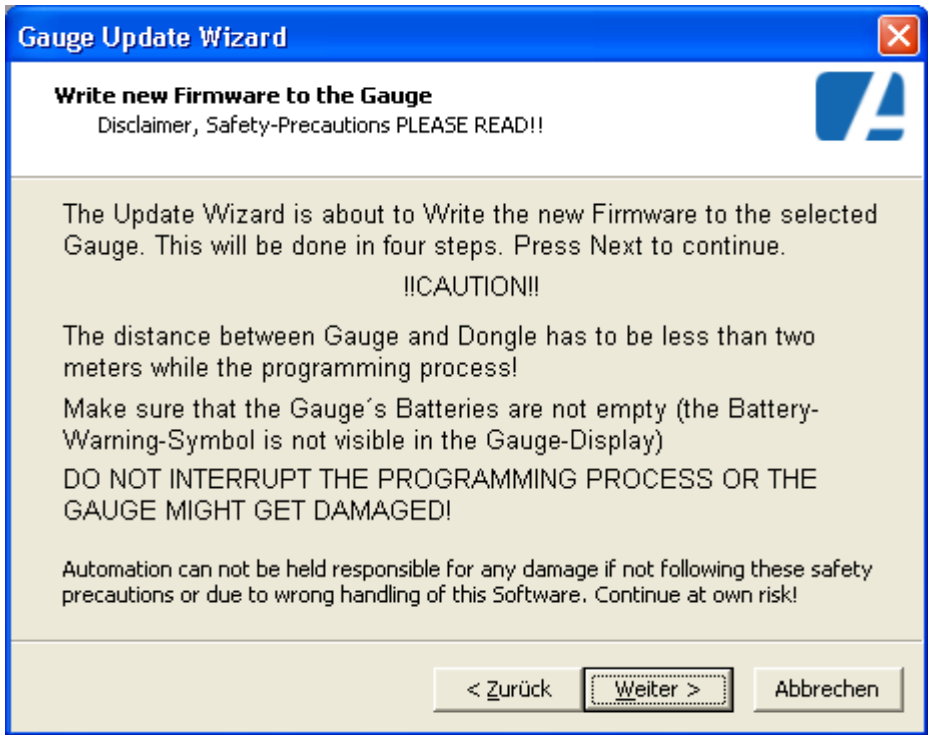
Screen 4: firmware selection screen with selected file

Click **Next** again.

The firmware will now be imported to the Update Wizard, and you will now be presented an information and warning screen.



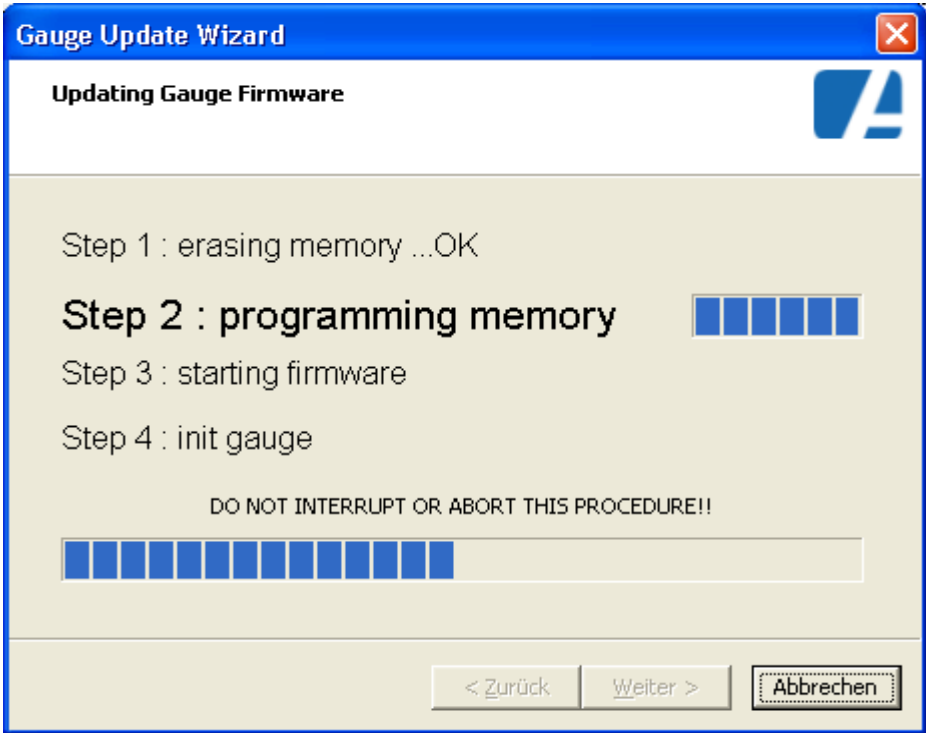
Screen 5: Update Wizard is importing a firmware file



Screen 6: information and warning screen

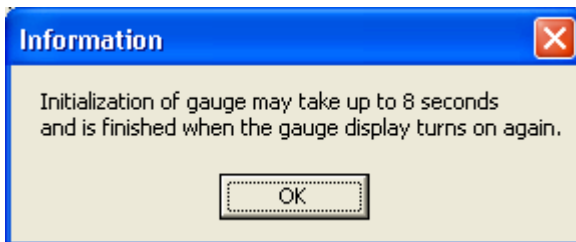
Please read the warnings carefully and stick strictly to the instructions. Click **Next** to continue.

The update progress window will appear, and the lights in the keypad of the gauge will flicker. Do not interrupt the update. It will last several minutes.



Screen 7: progress indicator

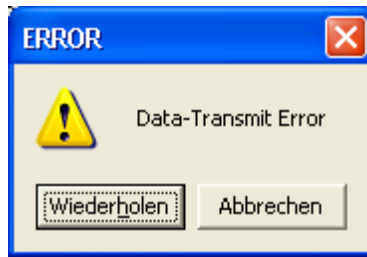
When the update is finished, the gauge will beep, and an ok box will tell you to wait another 8 seconds for the initialization of the gauge to finish.



When the display of the gauge turns on again, confirm that your gauge is updated by selecting „Setup/SystemInfo“ from the Menu.

Errors

If the download of the firmware is interrupted, the Update Wizard will display an error message:



Screen 8: Error message box

The light in the keypad will flash. Click **Retry** to retry the transmission. The software will try to continue the download.

If this fails (the error dialog box appears again), reset the gauge by removing and re-inserting a battery. Then click **Retry** again.

Clear Flash

The gauge contains a flash memory that is used to store the languages and the menus.

After an update, it is possible that the content of this memory does not match the new firmware version. In this case, the gauge might show improper menu entries, menu texts can be garbled or texts may be missing completely.

These issue can be solved by the **Clear Flash** button. When the button is clicked, the light in the keypad will flash several times, then the gauge will re-initialize the flash memory. This procedure can last several seconds.

Please note:

If you want to update the firmware after clearing the flash, you have to turn the wireless link on again, because it will be off after the initialisation.

The user languages will be lost after clearing the flash. The gauge will use the system language, which is English. Use the Language Editor to download the languages of your choice after the installation of the firmware.