

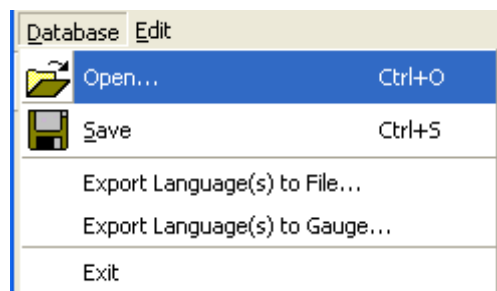
# Preparations

The user interface of the CarCheck gauge is designed to communicate with the user in any language and with any character set.

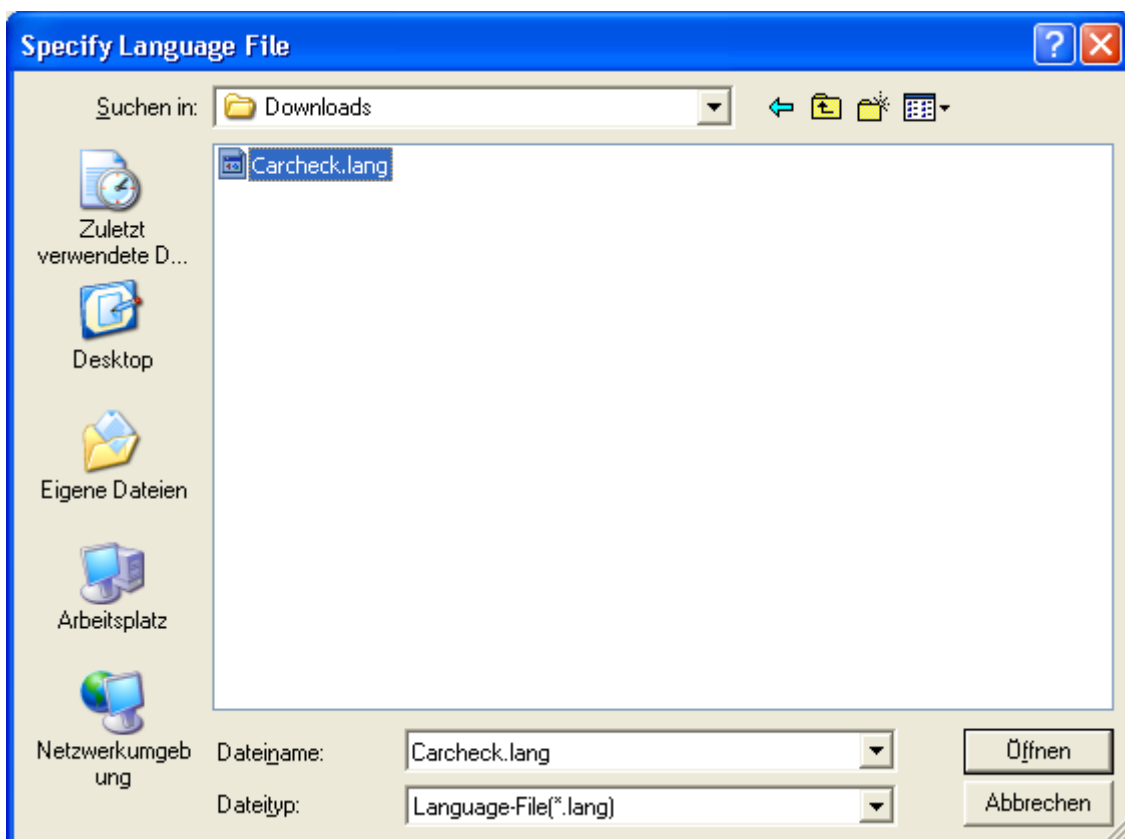
The gauge has 3 language slots that can be used for languages and their accompanying character sets with the help of a PC. On the PC the *QN Language Editor* has to be installed as well as the *QN-USB-RF dongle* with the appropriate drivers. You also need a current version of the gauge language database. A gauge language database file is provided with the Language Editor. This file is usually named „*carcheck\*.lang*“ and should be copied to the installation directory of the QN Software (often „C:\program files\QNLanguageEditor\“).

You can now start the Language Editor by selecting it from the Start menu or by double clicking the exe file in an explorer window.

The Language Editor starts up with the translation table that was used last. If this is not the file you want to use, you have to open the gauge language database. Select „Database/Open“ from the menu or click the „open file“ button.

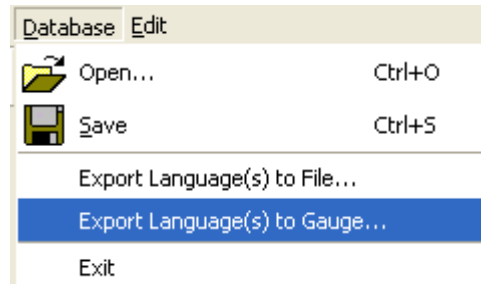


The file selection dialog should show the installation directory by default. Select „Carcheck.lang“.

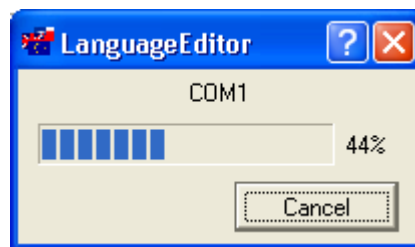


# Transmission Of Languages

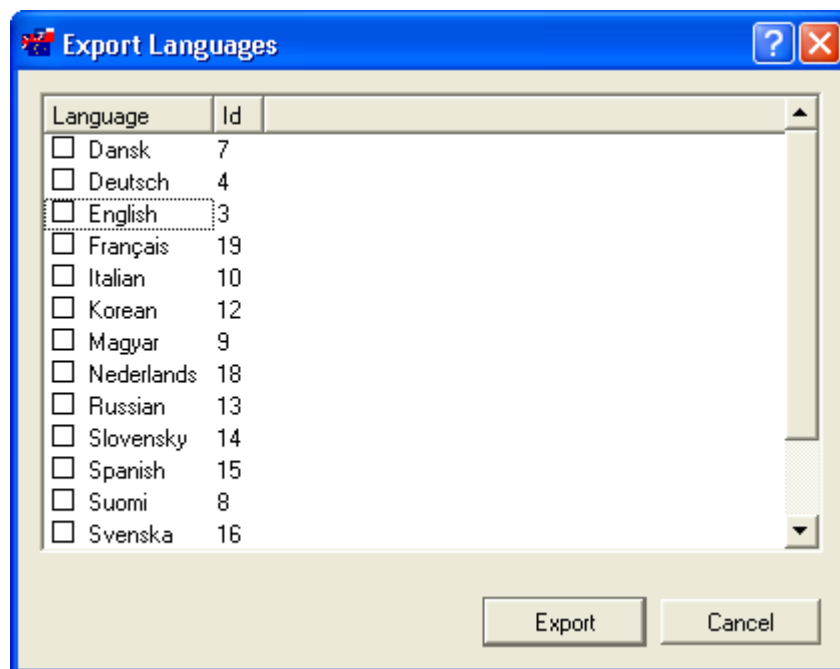
The Language Editor is now showing the language table of the CarCheck gauge. To transmit languages to a gauge, select „Export Language(s) to Gauge...“ from the Database menu. The wireless link of the gauge should be activated beforehand (select „Setup/Wireless/On“ at the gauge“).



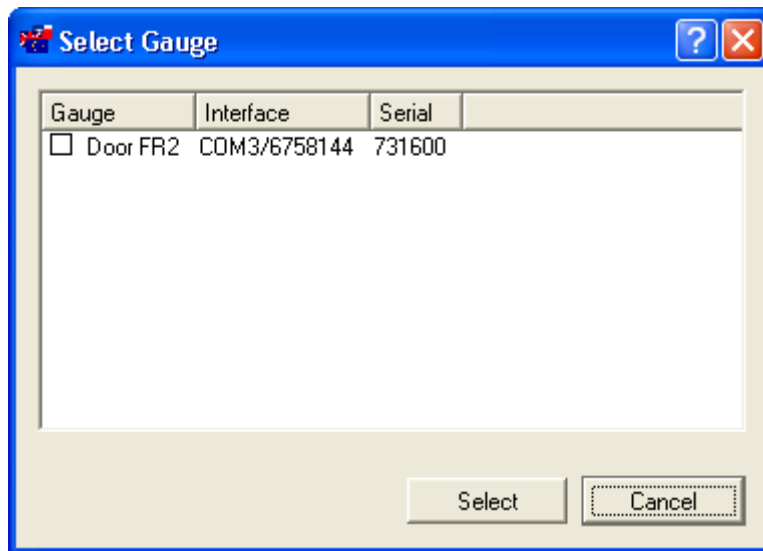
The Language Editor will now automatically browse the ports of the PC for compatible gauges.



It will then show a language selection dialog.

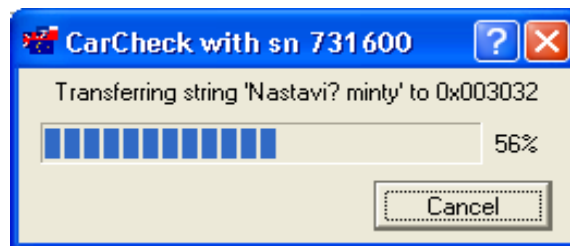
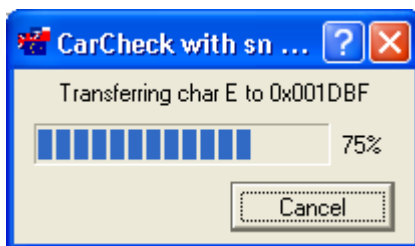


You can select up to 3 languages. Clicking on „Export“ leads to the next dialog.



Here you can select the gauge(s). You can select several gauges if you want to transmit the same languages to several devices. The program will deal with the gauges sequentially.

After a click on „Select“, the language(s) will be transmitted to the selected gauge(s). The program will send the languages sequentially into the slots of the gauge (character set first, then the character strings).



Note: The character set of the gauge will be locked during the transmission. If you try to use your gauge in any way during the transmission, the display could be erroneous. Please do not push a button or take a measurement during the language transfer.

When the transmission is finished, the display will be unlocked and you will find the new languages in the „Setup/Language“ menu.